

Seth Child Road Corridor Study

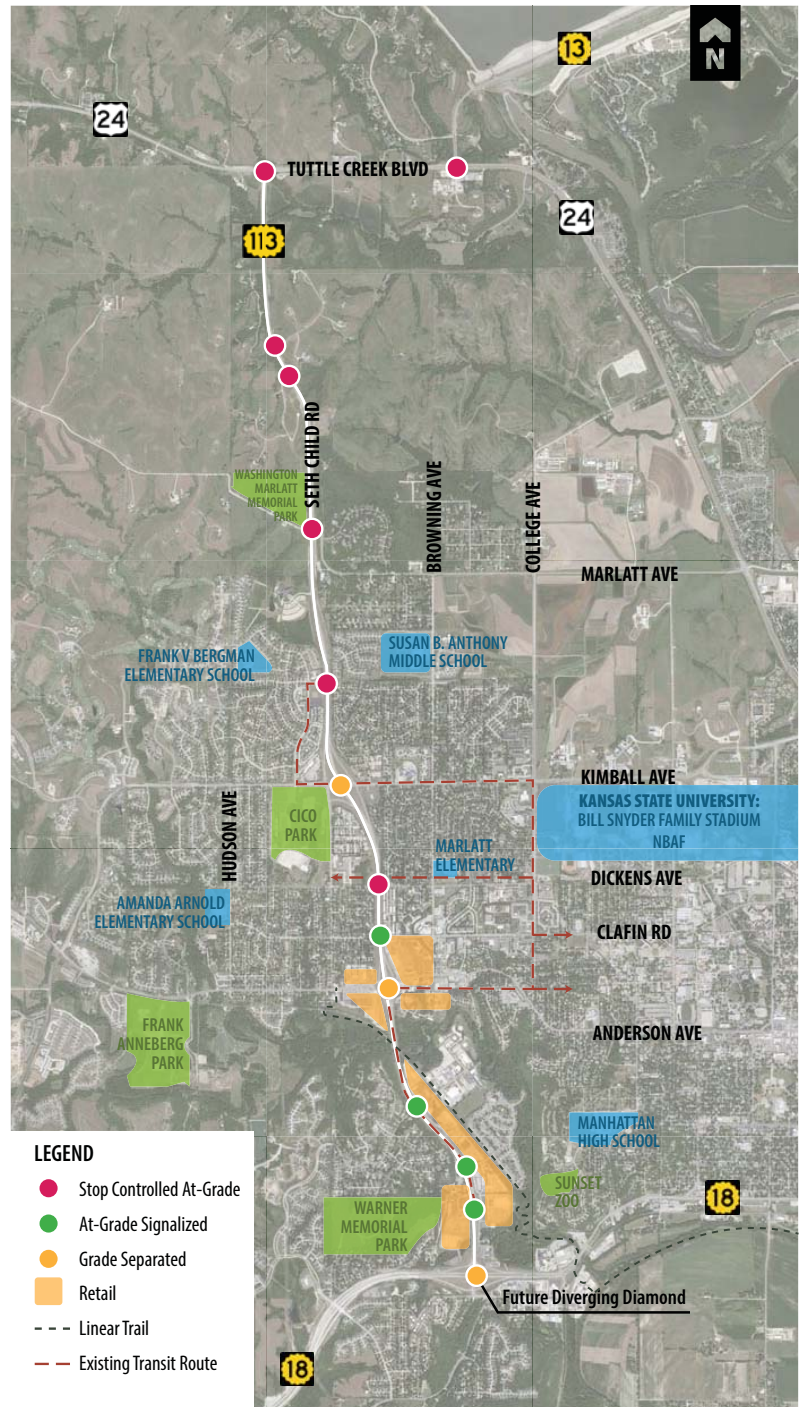
Open House Meeting

Manhattan First Assembly of God
Thursday, April 13, 2017 | 5:00 - 7:00 PM

The City of Manhattan is working with Alfred Benesch & Company to study Seth Child Road to address capacity, operations and safety improvements. Development and growth within the community makes Manhattan's future bright, but impacts to the traffic system, particularly the Seth Child Road corridor, are significant.

The study will evaluate a variety of intersection types on the 5.5 mile stretch of Seth Child Road. Results of the study will be used to help the Kansas Department of Transportation (KDOT), the City, and the County to create a long term vision for the corridor that promotes safety and efficiency. We will study traffic operations, accommodations for pedestrians and bicyclists, intersection geometrics, land use and redevelopment for existing conditions and a 25-year horizon.

The study will include land use planning and economic analysis. These components are important to tie in infrastructure improvements with long term benefits for the community.



LEGEND

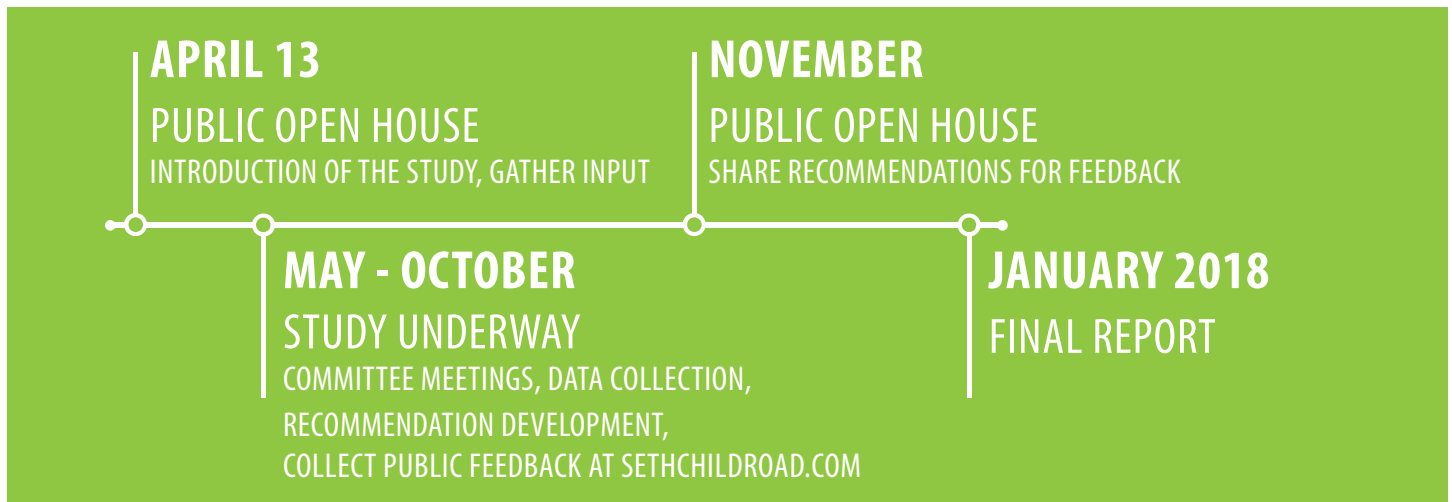
- Stop Controlled At-Grade
- At-Grade Signalized
- Grade Separated
- Retail
- - - Linear Trail
- - - Existing Transit Route



INTERCHANGES & INTERSECTIONS

The team will consider all intersections and interchanges along the corridor. The above map illustrates areas which require careful attention and accommodation for all modes of travel.

SCHEDULE



HOW CAN I PARTICIPATE?



Talk One-on-One with
Project Representatives



Complete a
Comment Form



Visit
sethchildroad.com



Attend the next
Public Open House

If you have specific questions you may speak with any of our study team members here tonight. We hope that you will share your comments and feedback with us. Comment forms are available for this purpose. By signing in to the meeting tonight, we will add your information to our database of project contacts. Should there be significant changes or a need for another meeting, you will be personally notified. We have also provided the contact information for our project managers below. Please feel free to contact any of them if questions arise in the future.

Chuck Bartlett, P.E.
Alfred Benesch & Company
3226 Kimball Avenue
Manhattan, KS 66503
(785) 539-2202
cbartlett@benesch.com

Rob Ott, PE
City of Manhattan
1101 Poyntz Avenue
Manhattan, KS 66502
(785) 587-2415
ott@cityofmhc.com

Gary Rosewicz, PE
Riley County
110 Courthouse Plaza
Manhattan, KS 66502
(785) 537-6330
grosewicz@rileycountyks.gov

Thank you for taking the time to attend tonight's meeting. We look forward to providing the citizens of Manhattan and the traveling public with innovative solutions that serve the community for years to come.

